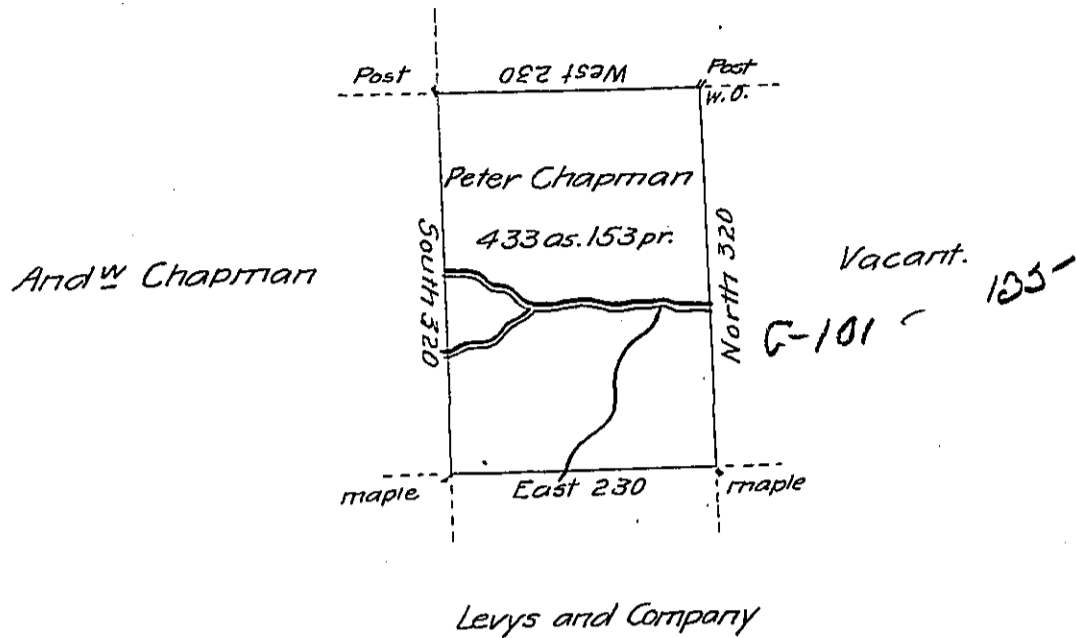


George Whitiker



Situate in Mifflin County Upper Bald Eagle Township on the waters of Beech Creek containing four hundred thirty three acres one hundred fifty three perches and the usual allowance for roads. Surveyed the 13<sup>th</sup> July 1792 in pursuance of a warrant dated 3 July 1792

Jo. J. Wallis D.S.

Daniel Broadhead Esq. S.G.

IN TESTIMONY that the above is a copy of the original remaining on file in the Department of Internal Affairs of Pennsylvania, made conformably to an Act of Assembly approved the 16th day of February, 1833, I have hereunto set my Hand and caused the Seal of said Department to be affixed at Harrisburg, this twenty first day of June 1904

*Isaac R. Brown*  
Secretary of Internal Affairs.